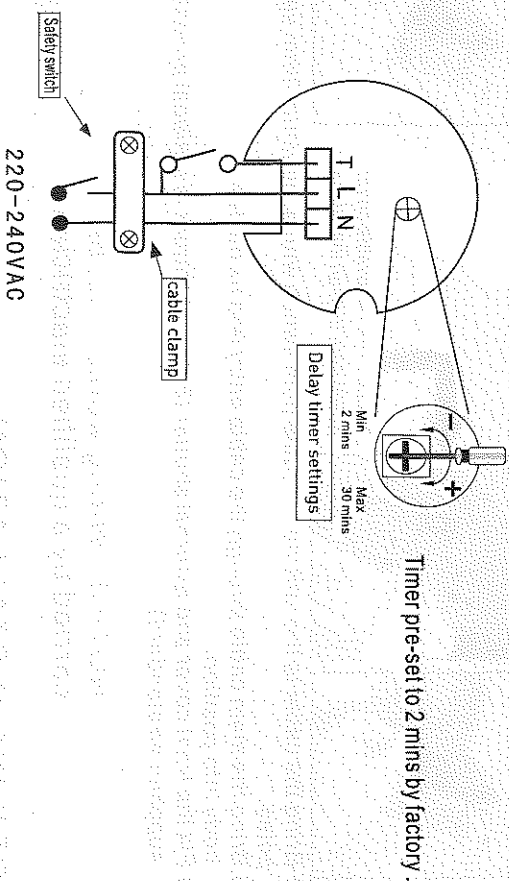


- Connect the Live (L), Neutral (N) and switched Live (T) (see below)
- Make adjustments to the delay timer for desired setting



NOTICE: SCREW TERMINALS MUST NOT BE OVER TIGHTENED! CAN NOT USE ELECTRIC SCREWDRIIVER FOR TERMINALS.

WIRING FOR MODELS WITH PIR MOTION SENSOR.

The fans are double in suited and do not need earth wire.

1. For partition fans, pre-cautions must be taken to avoid and back-flow of gases into the room from open flue gas fire or other appliances.
2. L---connecting to the live.
N---connecting to the neutral.

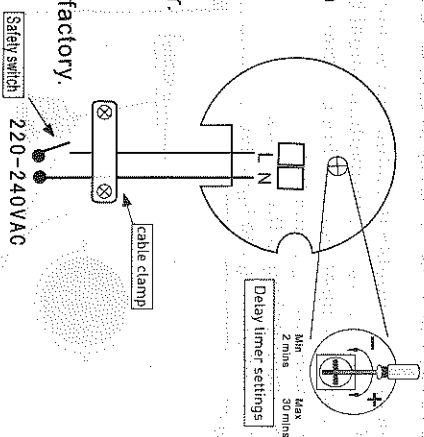
NOTICE: THE WORKING TEMPERATURE OF SENSOR IS -15°C TO 35°C

Motion sensor using instruction :

The bathroom fan , when connected to the power supply , will start to work after motion sensor is activated . Then the fan will be turned off with a programmed delay (2-30 min) counted from the last movement detected by the sensor. Meanwhile , the fan returns to stand-by.

Delayed time setting:

1. Turning clockwise, then the time will be longer. Turning conter-clockwise, then the time will be shorter.
2. The time delayed can be from 2 min to 30 min.
3. Usually, the delay time will be 2 min set by the factory.



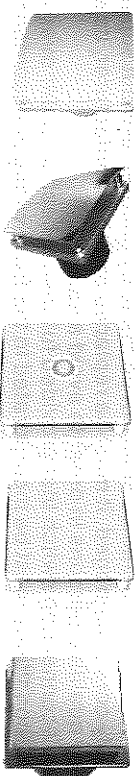
AIRMASTER

HEATING & VENTILATION

REMOVABLE FRONT PANEL EXTRACTOR FAN"

(With LED Surround Light/ Timer / Motion Sensor)

USER MANUAL/INSTRUCTIONS

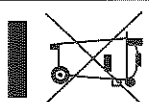


**Codes: RFP4T, RFP4T/CHR
RFP4T/GL, RFP4T/SS
RFP4TM/GL, RFP6T
RFP6T/CHR, RFP6T/SS**

Please read this manual carefully before operating this fan.

This product must not be disposed together with the domestic waste. This product has to be disposed at an authorized place for recycling of electrical and electric appliances. By collecting and recycling waste , you help to save natural resources , and make sure the products is disposed in an environmental friendly and healthy way.

This marking indicates that this product should not be disposed with other household wastes throughout the EU. To prevent possible harm to the environment or human health from uncontrolled waste disposal, recycle irresponsibly to promote the sustainable reuse of material resources. To return your used device, please use the return and collection systems or contact the retailer where the product was purchased. They can take this product for environmental safe recycling.



CED
ELECTRICAL
GROUP

44 - 48 FRESHWATER ROAD, DAGENHAM, ESSEX, RM8 1RX (UK)
E: info@cedelectrical.co.uk | W: www.cedelectrical.co.uk
T: 020 8503 8500 | F: 020 8503 8900

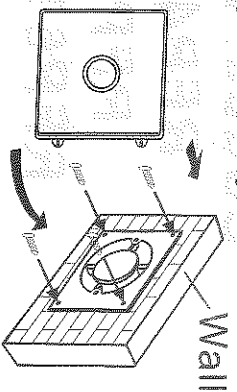
LOCATION & INSTALLATION

1. Assure the fans location to be as higher as possible. Min. Height is not less than 2.3m from the ground.
2. Assure the fans to be installed opposite the main sources of air-replacement with at least 30mm from the corner of wall and ceiling.
3. Assure the fans to be mounted as close to the sources of steam or odour as possible, but far enough away from anyone using a bath or shower so as not to be touched.
4. If the fans are to be installed in a room with a gas fire, wall heater etc with a non-balance flue, it is the installer's responsibility to ensure enough replacement air is available so that no air is drawn back through shutter is supplied additionally in the markets.
5. All the fans are to be mounted in different nations, please refer to the local building regulations carefully.
6. This appliance can be used by children aged from 8 years and above and persons with reduced physical, sensory or mental capabilities or lack of experience and knowledge if they have been given supervision or instruction concerning use of the appliance in a safe way and understand the hazards involved. Children shall not play with the appliance. Cleaning and user maintenance shall not be made by children without supervision.
7. If the supply cord is damaged, it must be replaced by the manufacturer, its service agent or similarly qualified persons in order to avoid a hazard.
8. All poles disconnection switch that provided full disconnection under over voltage category III conditions must be incorporated in the fixed wiring in accordance with the wiring rules.

Warning: Must switch off the mains supply before any installation.

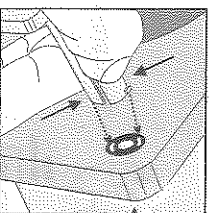
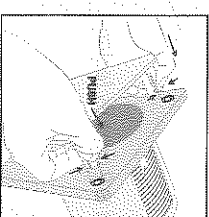
WALL INSTALLATION

1. Ensure to choose right voltage shown in the label before connecting with power source.
2. Cut an appropriate size hole in the wall, ensure there are no cables or pipes buried in the wall when cutting. The internal and internal wall flush, allow the ducting to slope slightly to the external wall, this will allow drainage of any ingress from rains etc, make good the hole with motor and allow to set before connecting with the installation.

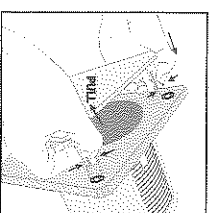


OUTER DIMENSION(mm)					
Model	A	B	C	D	E
4" (100mm) models	158	150	39	81	100
6" (150mm) models	196	170	43	125	150

3. Remove the front cover of fan and position the fans against the wall and mark the four fixing points and cable entry, then to drill to suit.



Notice : The removable cover needs care to align the latches !



4. Bring the cable to the unit via a double pole switch with a minimum 3mm separate on all poles.
5. Bring the main cable through the cable entry and fix the fan body into position.
6. Fix the front cover and external shutter (External shutter is optional accessory, not supplied as standard).

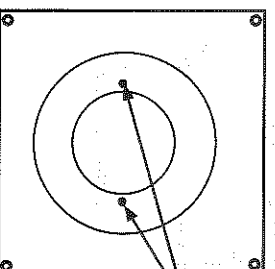
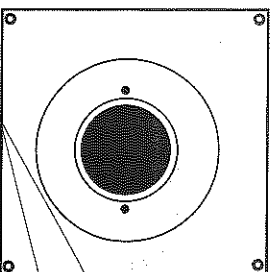
NOTICE: Wiring works must be carried by a qualified electrician.

CEILING INSTALLATION

1. Position a suitable location for the fan and cut a flush hole in ceiling to size.
2. Remove the front cover of fan follow the step 3 (Wall installation) the main cable to the unit and bring the main cable to the unit.
3. Pass the main cable through the cable entry and fix the unit into position using suitable fixings (the fixings not supplied), if the fan may also be fixed to interior ceiling, please use the 2 quick fits to firm the fan into ceiling, the said 2 quick fits are fitted into the two sides of the fan body with screws.
4. Ceiling mounted units must be ventilated to the outside and not into the ceiling to avoid or lofts space, using a flexible duct and a back draught shutter to suit.

WIRING FOR MODELS WITH TIMER

- The fans are double in suited and do not need earth wire.
1. For partition fans, pre-cautions must be taken to avoid and back-flow of gases into the room from open flue gas fire or other appliances.
 2. L---connecting to the live.
 - N---connecting to the neutral.
 - T---connecting the light live or switched live



Remove screws and lift cover to access connections